

MOBILE SCHEDULING

BASED UPON THE SUCCESS OF BUILDERMT'S AWARD-WINNING WIRELESS SCHEDULING, COMES, "MOBILE SCHEDULING"

Mobile Scheduling improves the communication between the home office and the job site. Using Mobile Scheduling, superintendents can monitor, control, and communicate daily construction activities. From the field they're able to keep accurate construction schedules and have the information they need to reduce costly errors and maintain consistent cycle times.

FEATURES AND EFFICIENCIES

- Manage and track schedule changes.
- Track and measure variance control.
- Keep in contact with others using notes and reminders.
- Communicate with trade or suppliers via "Smart Phones" with calling, text messaging and e-mail.
- Manage and complete activity checklists and quality control walks-throughs.

SEAMLESS INTEGRATION

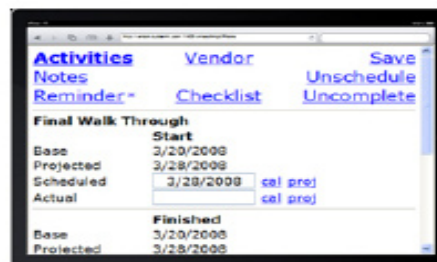
Using any browser based device, Mobile Scheduling enables you to keep on track with the project. With improved communication with trades and suppliers lowers the cycle time of a project. Additionally, with the integration to Accounting and Sales, the builder has the ability to:

- Manage cash flow.
- Project accurate home closing dates.
- Approve purchase orders for payment.
- Auto send vendor notifications via print, fax, e-mail and Trade Portal.
- Provide up-to-date status of a given activity or task.
- Enter reminders and notes.
- Define variance codes for determining delays in schedules.
- Effectively manage trade resources.

BlackBerry Calendar View



i-Pad Activities View



i-Phone Job View



Use handheld devices to enter variance codes as well as start and finish dates for scheduled and actual. Actual dates entered will trigger updates to the schedule and auto-select associated POs as ready for payment.

THE ADVANTAGES OF A BROWSER-BASED APPLICATION ARE:

- No rollout procedure to deploy the client to your phones or laptops – it's accessible from any device that has a browser and internet connectivity
- No upgrade procedures to the phones or laptops – all new features are implemented at the server level and automatically delivered to the end user
- No disk space on the phone
- Cross-platform usability – any smart phone, BlackBerry, or iPad device can nicely render the interface to the end user
- No waiting to synchronize all the schedules
- Real-time communication with the host application and database

Please note: Mobile Scheduling requires a Web Server to run the application and deploy to the web.